

AS PART OF INITIAL PHASING PROCESS, THE EXISTING CROSSING WILL BE RELOCATED, BY ATLAS GP LTD., AS PER AECOM DRAWING No. PR461030-ACM-XX-00-DR-CE-10-0001 'PROPOSED GENERAL ARRANGEMENT'

INTENDED STREETSCAPE / PUBLIC REALM UPGRADES SUBJECT TO CONSENT OF DUN LAOGHAIRE-RATHDOWN COUNTY COUNCIL

NOTE: BASEMENT WORKS AND SITE LEVELLING TO BE CARRIED OUT FIRST, FOLLOWED BY ALL BLOCKS IN ONE PHASE

LEGEND

PHASE 1:

428 Units	41 NO. STUDIO
	285 NO. ONE-BEDROOM
	94 NO. TWO-BEDROOM
	8 NO. THREE-BEDROOM

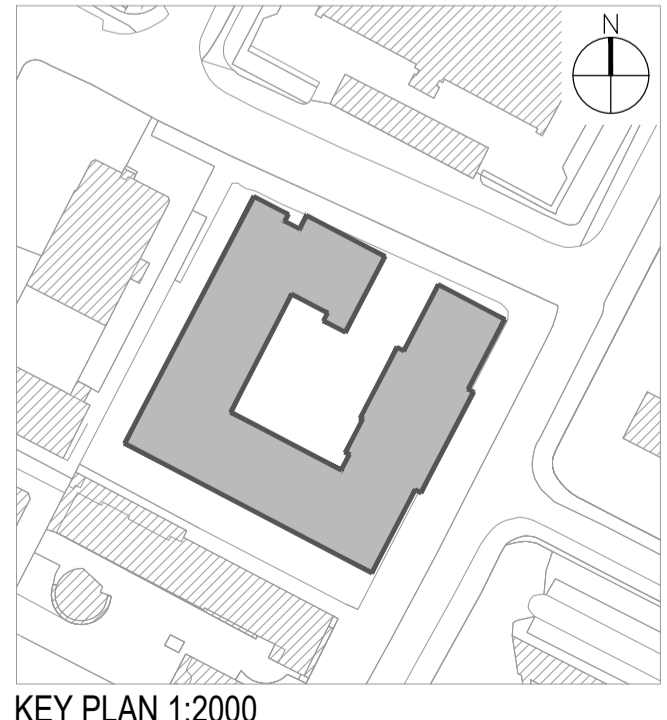
PUBLIC OPEN SPACE 2,746m²
 COMMUNAL AMENITY SPACE 2,600m²
 PRIVATE AMENITY SPACE 3,375m²
 RESIDENTIAL AMENITY SPACE 1,641m²

145 NO. CAR PARKING SPACES
 752 NO. BICYCLE PARKING SPACES

GREEN ROOF SPACE

APPLICATION SITE BOUNDARY (RED LINE)

REFER TO LANDSCAPE ARCHITECTS DRAWING FOR FURTHER DETAILS OF HARD AND SOFT LANDSCAPING AND BOUNDARY FINISHES



Notes

1. Copyright Reserved
2. Work to ignore dimensions only. Do not scale drawing
3. The contractor is responsible for checking all levels and dimensions on site and shall refer all discrepancies to the Architect
4. Where appropriate, for details of r.c. structure, or mechanical and electrical details, see Engineers drawings
5. Proprietary items shall be fixed in strict accordance with manufacturers instructions.
6. Sizes of proprietary items shall be checked with manufacturer.
7. The contractor shall be responsible for the coordination of structure, finishes and services.

Issue Status	Progress
Planning Application	■
Fire Cert	
Disability Cert	
Tender	
Construction	
As Built	
Information Only	

No.	Date	Revision	Initials
PL1	JULY 2020	PLANNING APPLICATION ISSUE	FF
PL2	JAN 2021	PLANNING APPLICATION ISSUE	PC

Project	Carmanhall Road SHD Atlas GP Ltd.		
Drawing Title	Phasing Plan		
Drawing No	6246-007		
Scale	1:500@A1	Rev	PL2
Drawn	FF	Date	15/06/20

6-7 HARCOURT TERRACE, DUBLIN 2, IRELAND
 t +353 1 678 2400 f +353 1 678 7396
 www.bkd.ie

bkd architects
 BURKE-KENNEDY DOYLE